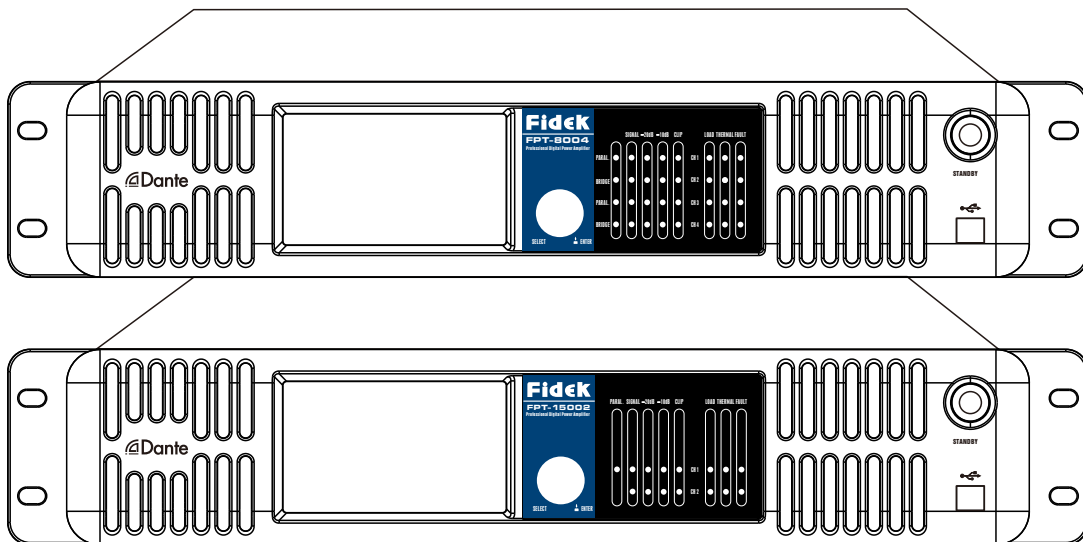


FPT-8004
FPT-15002



USER'S MANUAL

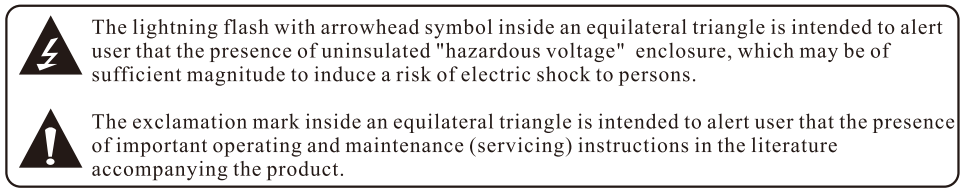
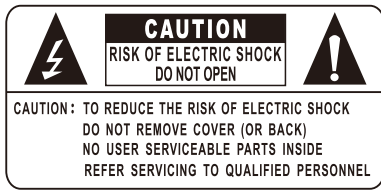
CONTENT

1. FEATURES.....	2
2. IMPORTANT SAFETY INSTRUCTIONS.....	3
3. FRONT PANEL FUNCTION INTRODUCTION	
FPT-8004 FRONT PANEL.....	4
FPT-15002 FRONT PANEL.....	5
4. REAR PANEL FUNCTION INTRODUCTION	
FPT-8004 REAR PANEL.....	6
FPT-15002 REAR PANEL.....	7
5. SET.....	8
6. FUNCTION INTRODUCTION.....	9-11
7. PC SOFTWARE ASSEMBLING.....	12-13
8. DANTE CONTROL FUNCTION.....	14-15
9. COMPUTER INTERFACE SOFTWARE COMMUNICATION CONTROL FUNCTION.....	15
10. CONNECTION.....	16
10. LINK DIAGRAM.....	17
11. ONLINE CONTROL SYSTEMS.....	18
12. TROUBLESHOOTING.....	18
13. SIGNAL FLOW DIAGRAM.....	19
14. SPECIFICATIONS.....	19

FEATURES

1. Plug and play USB/RJ45 network ports that are automatically connected.
2. Ethernet TCP/IP on-line multiprocessor management.
3. DANTE network Audio Technology, low latency, not interference from conventional Analog signals. capable of up to 512 channels long distance digital, can be switched freely.
4. DSP high speed processing.
5. TFT color touch intuitive operation, level status display using intuitive.
6. Multiple input Y and output modes (Stereo、 Sum、 Input Y) , Multiple input Y source selection (GENERATOR、 ANALOG、 AES3、 DANTE) with a variety of signal sources (white noise、 pink noise、 sine wave sweep signal).
7. Audio voltage limiter, delay control.
8. Input 6 segments of EQ including 2 types of multiple choice, output 8 segments of EQ have frequency, bandwidth, gain settings.
9. Multiple filter type settings (Linkwitz-Riley、 Butterworth、 Bessel、 6dB/oct、 12dB/oct、 18dB/oct、 24dB/oct、 30dB/oct、 36dB/oct、 48dB/oct).
10. With temperature, load detection function. Real-time detecting work temperature, voltage and current of power amplifier automatically adjust output work rate that enables the amplifier to work in optimal working conditions.
11. 30 preset features for easy invocation.
12. Analyze the load of the power amplifier in real time, judge the negative sound box of the power amplifier, determine whether there is an open channel or a short circuit in the speaker line, and the whole speaker audio curve can be scanned prior to normal use after booting, make sure all systems of the speaker is good.
13. Multi-user program management is easy to operate.

IMPORTANT SAFETY INSTRUCTIONS



1. Read these instructions.
2. Keep these instructions.
3. Heed all warnings.
4. Follow all instructions.
5. Do not use this apparatus near water.
6. Clean only with dry cloth.
7. Do not block any ventilation openings. Install in accordance with the manufacturer's instructions.
8. Do not install near any heat sources such as radiators, heat registers, stoves, or other apparatus (including amplifiers) that produce heat.
9. Do not defeat the safety purpose of the polarized or grounding-type plug. A polarized plug has two blades with one wider than the other. A grounding type plug has two blades and a third grounding prong. The wide blade or the third prong are provided for your safety. If the provided plug does not fit into your outlet, consult an electrician for replacement of the obsolete outlet.
10. Protect the power cord from being walked on or pinched particularly at plugs, convenience receptacles, and the point where they exit from the apparatus.
11. Only use attachments/accessories specified by the manufacturer.
12. Use only with the cart, stand, tripod, bracket, or table specified by the manufacturer, or sold with the apparatus. When a cart is used, use caution when moving the cart/apparatus combination to avoid injury from tip-over.
13. Unplug this apparatus during lightning storms or when unused for long periods of time.
14. Refer all servicing to qualified service personnel. Servicing is required when the apparatus has been damaged in any way, such as power-supply cord or plug is damaged, liquid has been spilled or objects have fallen into the apparatus, the apparatus has been exposed to rain or moisture, does not operate normally, or has been dropped.
15. The apparatus shall not be exposed to dripping or splashing and that no objects filled with liquids, such as vases, shall be placed on the apparatus.
16. The MAINS plug is used as the disconnect device, which shall remain readily operable.

Disposal of Old Electrical & Electronic Equipment (Applicable in the European Union and other European countries with separate collection systems)

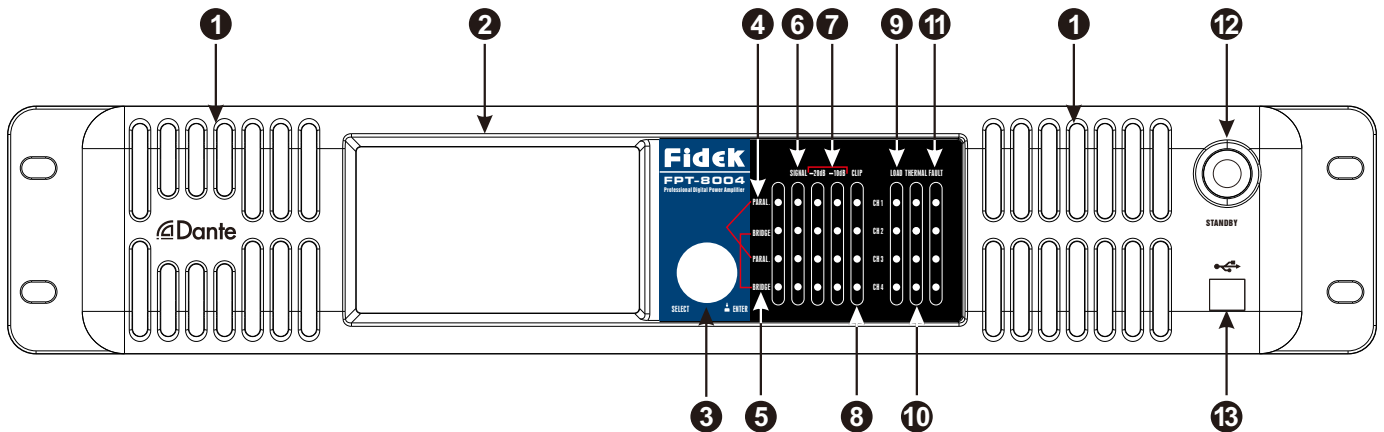
This symbol on the product or on its packaging indicates that this product shall not be treated as household waste. Instead it shall be handed over to the applicable collection point for the recycling of electrical and electronic equipment. By ensuring this product is disposed of correctly, you will help prevent potential negative consequences for the environment and human health, which could otherwise be caused by inappropriate waste handling of this product.



The recycling of materials will help to conserve natural resources. For more detailed information about recycling of this product, please contact your local Civic Office, your household waste disposal service or the shop where you purchased the product.

FRONT PANEL FUNCTION INTRODUCTION

FPT-8004 FRONT PANEL



1. Vents

They are the main vents of amplifier, Please keep them clear to allow air flow.

2. Edit touch screen

The audio signal of network power amplifier can be balanced, divided, delay and limited by editing touch screen.

3. Optional/Deterministic Code switch

Selection and determination, left and right rotate select menu data, press lightly to determine.

4. Parallel indicator LED

Export CH1/CH2 from CH1 Input number, CH1/CH2 with CH1 message CH1/CH2 input from CH1/CH2. GUI soft integrated indicator will light in these two condition.

5. Bridge indicator

When the output mode of GUI soft or touch screen control soft set to “bridge to single channel”, the bridge indicator will light up.

6. Signal indicator LED

When there is signal input the signal LED will light.

7. Level indicator

When the input signal reaches -20dB, the indicator of -20dB will light and if reach -10dB the indicator of -10dB will light.

8. Clipping indicator light

Input signal exceeds the max signal value of input sensitivity will lead to the output signal distortion, pls reduce the input signal to guarantee output signal not to be distortion.

9. Impedance indicator LED

When there is a problem with the load Impedance of the test amplifier connection, the indicator LED will light.

10. Temperature indicator LED

The Temperature indicator LED will light when the temperature of the amplifier is over high.

11. Protect indicator LED

When there is a problem with the amplifier the indicator LED will light.

12. Touch screen backlight control

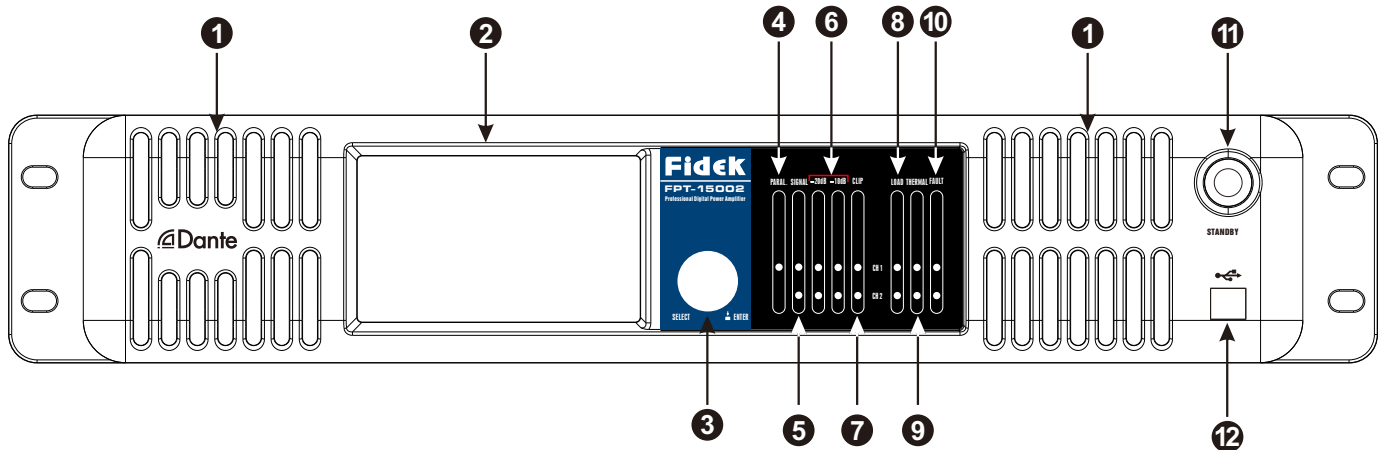
If not touch the screen after 15 minutes the backlight will be crushed out, touch the switch to turn of the backlight and touch again the screen the backlight will light.

13. USB Debug port

The user can use the USB line to connect the amplifier with the PC, also can use the GUI soft in PC to control the amplifier.

FRONT PANEL FUNCTION INTRODUCTION

FPT-15002 FRONT PANEL



1. Vents

They are the main vents of amplifier, Please keep them clear to allow air flow.

2. Edit touch screen

The audio signal of network power amplifier can be balanced, divided, delay and limited by editing touch screen.

3. Optional/Deterministic Code switch

Selection and determination, left and right rotate select menu data, press lightly to determine.

4. Parallel indicator LED

Export CH1/CH2 from CH1 Input number, CH1/CH2 with CH1 message CH1/CH2 input from CH1/CH2. GUI soft integrated indicator will light in these two condition.

5. Signal indicator LED

When there is signal input the signal LED will light.

6. Level indicator

When the input signal reaches -20dB, the indicator of -20dB will light and if reach -10dB the indicator of -10dB will light.

7. Clipping indicator light

Input signal exceeds the max signal value of input sensitivity will lead to the output signal distortion, pls reduce the input signal to guarantee output signal not to be distortion.

8. Impedance indicator LED

When there is a problem with the load Impedance of the test amplifier connection, the indicator LED will light.

9. Temperature indicator LED

The Temperature indicator LED will light when the temperature of the amplifier is over high.

10. Protect indicator LED

When there is a problem with the amplifier the indicator LED will light.

11. Touch screen backlight control

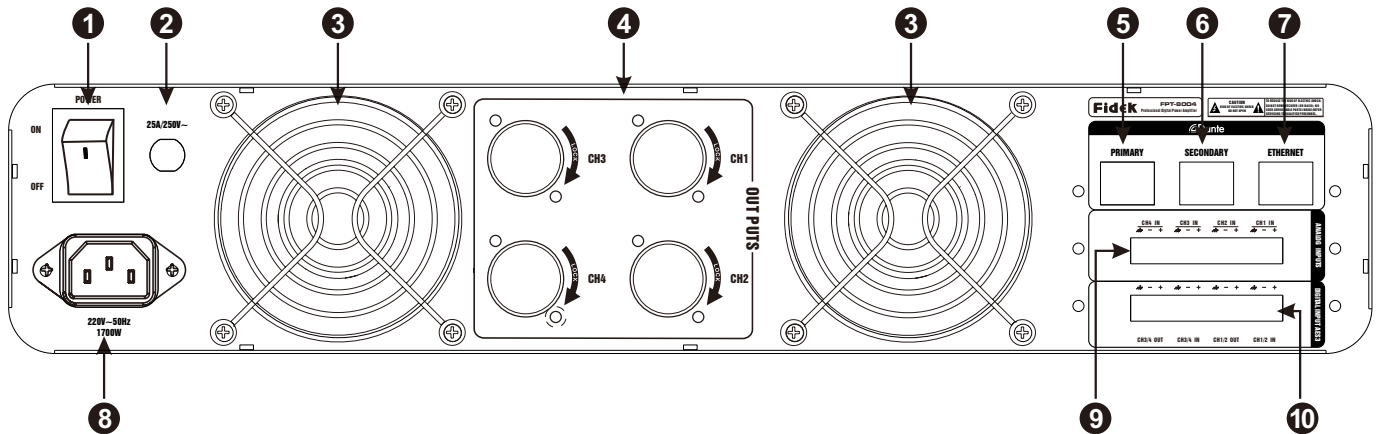
If not touch the screen after 15 minutes the backlight will be crushed out, touch the switch to turn of the backlight and touch again the screen the backlight will light.

12. USB Debug port

The user can use the USB line to connect the amplifier with the PC, also can use the GUI soft in PC to control the amplifier.

REAR PANEL FUNCTION INTRODUCTION

FPT-8004 REAR PANEL



1. Power Switch

Push the switch to the “on” position, the indicator light, it means the amplifier is turned on. Push the switch to the “OFF” position, the amplifier is turned off.

2. Breaker

When the amplifier is under protection mode, the protecting device of circuit-breaker will leap up. And after cleaning the breakdown, please press the device down, then it can back to work.

3. Fan Vents

They are the main vents of the amplifier. please keep them clear to allow air flow.

4. SPEAKON output socket

The output speaker socket of channel 1/2/3/4, connect speaker + to PIN 1+, connect speaker - to PIN 1-.

5. PRIMARY/ETH main network Dante port

Primary/Eth support Dante connection

6. Secondary/ETH second network Dante port

Secondary/ETH can guarantee the continuity of operation

7. ETHERNET network debugging port

It can connect with computer to configure various parameters.

8. Power input socket

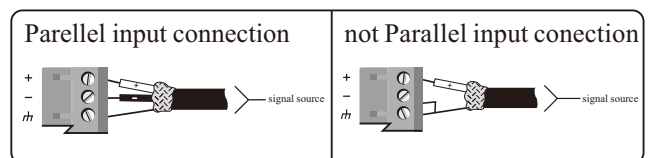
Can use the matched power cable to contact with this port.

9. Analog input interface

CH1/CH2/CH3/CH4 Analog signal are input from this port. there are two input connection way: parallel or not parallel.

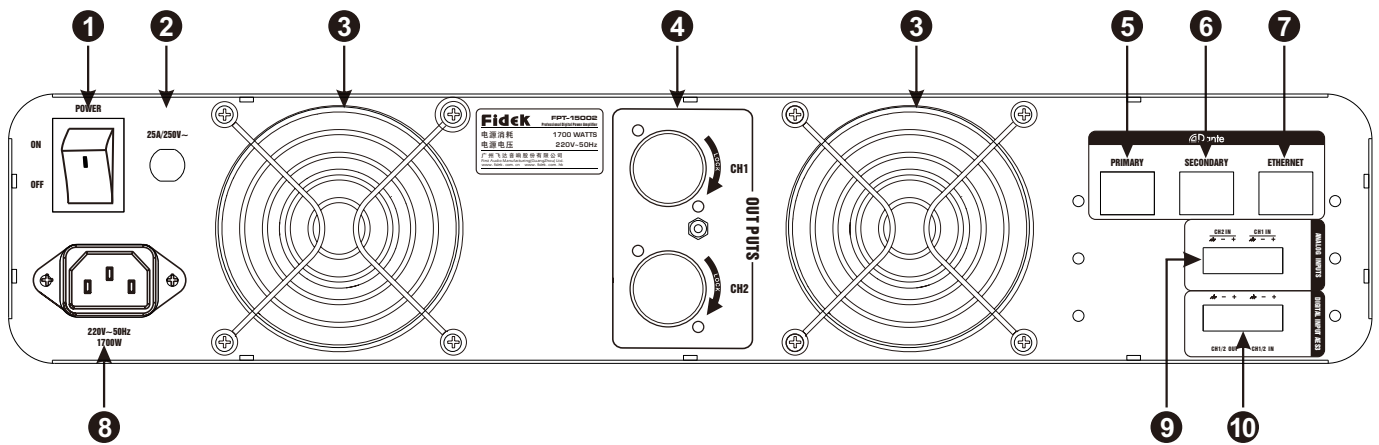
10. AES number input/output port

Support AES-EBU signal input and output, the post line connection as below:



REAR PANEL FUNCTION INTRODUCTION

FPT-15002 REAR PANEL



1. Power Switch

Push the switch to the “on” position, the indicator light, it means the amplifier is turned on. Push the switch to the “OFF” position, the amplifier is turned off.

2. Breaker

When the amplifier is under protection mode, the protecting device of circuit-breaker will leap up. And after cleaning the breakdown, please press the device down, then it can back to work.

3. Fan Vents

They are the main vents of the amplifier. please keep them clear to allow air flow.

4. SPEAKON output socket

The output speaker socket of channel 1/2, connect speaker + to PIN 1+, connect speaker - to PIN 1-.

5. PRIMARY/ETH main network Dante port

Primary/Eth support Dante connection

6. Secondary/ETH second network Dante port

Secondary/ETH can guarantee the continuity of operation

7. ETHERNET network debugging port

It can connect with computer to configure various parameters.

8. Power input socket

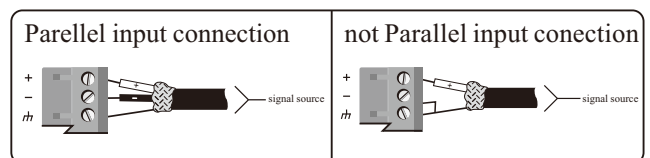
Can use the matched power cable to contact with this port.

9. Analog input interface

CH1/CH2/CH3/CH4 Analog signal are input from this port. there are two input connection way: parallel or not parallel.

10. AES number input/output port

Support AES-EBU signal input and output, the post line connection as below:

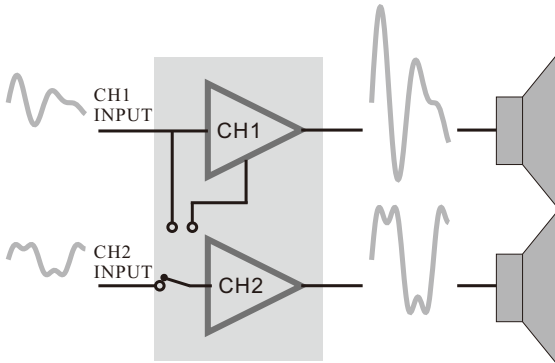


SET

FPT-15002 Double channels mode: Stereo/CH1+CH2/Y type input, single channel: Bridge-single channel mode, Ch1/CH2 can combine to bridge mode, CH3/CH4 can combine to bridge mode.

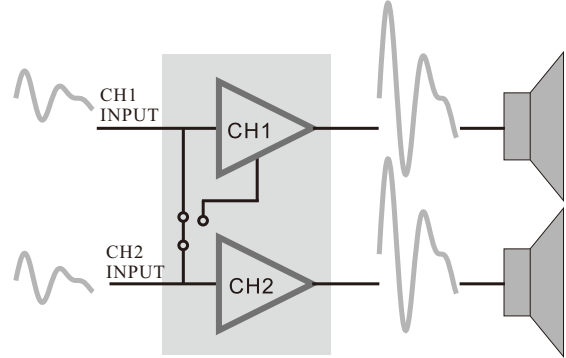
FPT-15002 Double channels mode: Stereo/CH1+CH2/Y type input.

Stereo mode



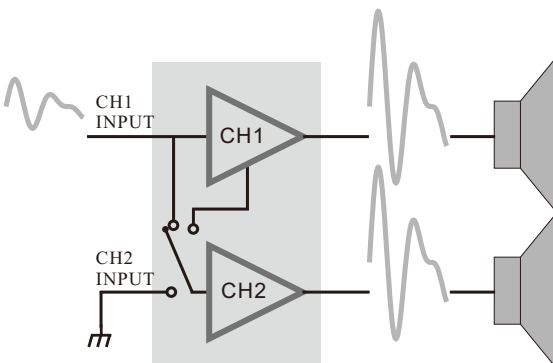
In stereo mode, both channels operate independently, with their input attenuators controlling their respective levels. signal at channels CH1's output, while signal at CH2's input produces output at CH2's output.

CH1+CH2 mode



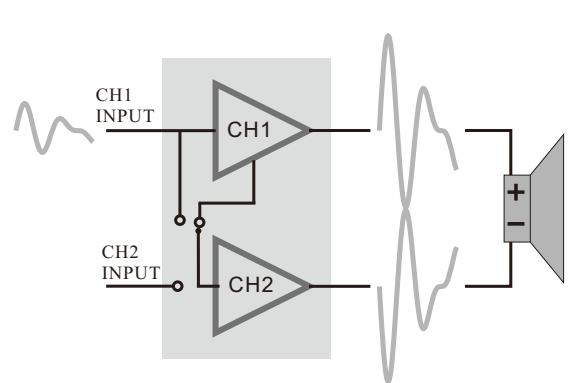
CH1+CH2 input means CH1 plus CH2 signal to amplifier then output the plus signal.

Y type mode



The input signal of CH1 and CH2 in parallel mode, CH1 and CH2 output the same signal.

Bridge mode



This mode combines the full power capabilities of both channels into a single speaker system. the amplifier internally re-configures so that both channels operate as a unit. signals at channel CH1's input produces at speaker +, signals at channels CH2's input produces output at speaker-.

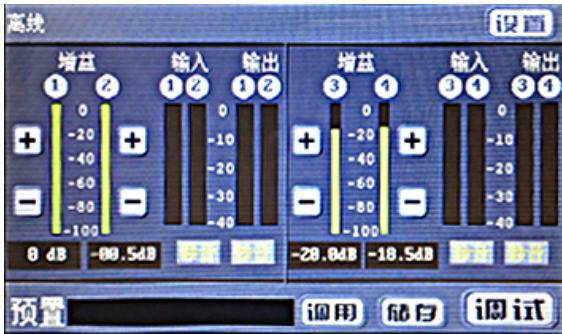
FUNCTION DESCRIPTION

一、Normal boot Process

- A. Connect the power line, press the power switch, display screen displays the trademark number.
- B. Then the machine starts loading the data and the machine displays the main interface when it is finished. Display the current input and output volume and the status.

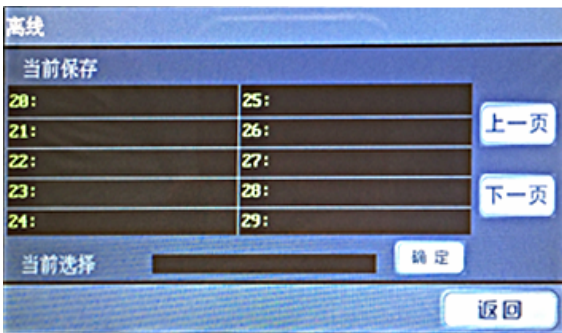
二、Main menu

1. Go to the main menu display screen after booting normally.
2. Select the output gain that needs to be adjusted, and adjust the parameter by rotating knob.
3. Click on [+], [-] of the output gain of the target channel on the screen to adjust the parameter.
4. Tap the other buttons on the main screen to jump to other interfaces and features.
5. Volume parameter is as follows: Music volume; Mute, -100dB~0dB, step distance 0.5dB.



四、Program Storage Menu

1. Switch to the program storage interface by clicking the <storage> key of the main screen.
2. Press the previous page, the next switch program save the location interface, a total of 30 programs can be saved.
3. Select the program serial number you want to save and the default program name preset1~preset30 appears on the spin knob, and then click <save>.
4. You can save it online by desktop control software and save it with your own name, but notice that the Chinese character library is incomplete, so please avoid using Chinese when naming.



六、Debugging the interface menu

1. Click the <debug> key of the main screen to enter the debugging interface.
2. In the debugging interface, there are input, output mode, input equalization, frequency division network, output equalization, delay, voltage limit, voltage-temperature, load and other function keys.
3. Click the button to enter the corresponding function sub-interface.



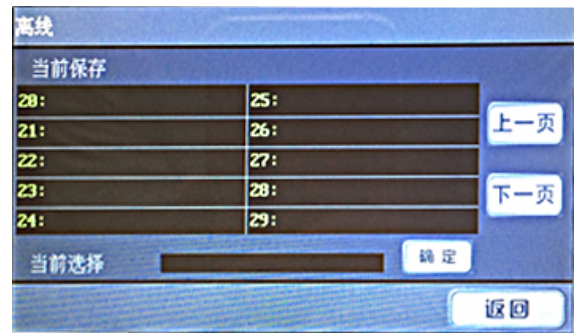
三、Setting up Menus

1. Right click on the main screen, upper corner of the <Settings> key switch to the settings menu.
2. Enter your password in the lock screen function and click <lock> to lock screen operation. Re-enter your password and click <unlock> to unlock it. Only the machine interface and the settings interface can be operated when the screen is locked.
3. Select the specified segment of the IP address, rotate the knob to adjust the IP address, adjust IP with the machine-linked computer IP to the modification, click <ok> to complete the modification. An IP address is used to connect a machine to a computer's network.
4. Click on the right language to switch between Chinese and English.
5. Click on <Return> to return to the next level of menu.



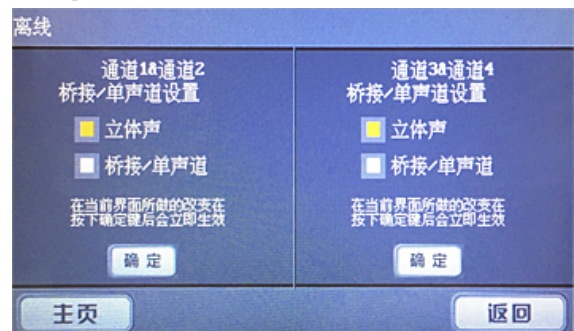
五、Program Call Menu

1. Switch to the program call screen by clicking the <call> key of the main screen.
 2. Press the previous page and the next page toggles the program call location interface.
 3. Select the program serial number you want to call, and then click ok.
 4. You can also make calls online through desktop control software.
- Note: GUI can also be used to store, call, delete, save to the computer, import from the computer and other functions of these programs.



七、Output Menu

1. The output mode includes bi-channel, bridge-mono, and the required set-point hits (Application) will take effect. Take Channel 1 and 2 as an example;
2. Dual Channel Mode: Channel 1 and Channel 2 both have output in this mode.
3. Bridging-Mono: In this mode, channel 1 has output and channel 2 has no output.



FUNCTION DESCRIPTION

八、Input Menu

- Input mode selection: including stereo, superposition and type Y input. Take channels 1 and 2 as example:
Stereo mode: The output of channel 1 is controlled by Channel 1 input and the Channel 2 is controlled by Channel 2 input, neither of which interferes with the other.
Superposition mode: Channel 1 output is controlled by Channel 1 input and Channel 2 input. Channel 2 output is controlled by Channel 1 input and Channel 2 input.
Y input mode: Channel 1 output is controlled by Channel 1 input and Channel 2 output is controlled by Channel 1 input.
- Input source election: including generator mode, analog mode, digital AES3 mode, Dante mode.
Generator mode: Used to produce white noise, power noise, sweep signal and so on inside the machine.
Analog mode: For analog signal input, either 0dB or -6dB attenuation can be selected.
Digital AES3 mode: For digital input.
Dante mode: For Dante signal input.
Switch to the corresponding input source when using the corresponding input signal, otherwise no output will be generated.
- Parameter adjustment: it can adjust the gain of white noise and powder noise, the gain and speed of sweep of sweep signal.
White noise: turn on/off, -100dB~0dB, step 0.5dB.
Powder noise: Turn on/off, -100dB~0dB, step 0.5dB.
Sweep signal: Turn on/off, -100dB~0dB, step 0.5dB.
The higher the teaching value, the faster the sweep signal changes and the maximum change speed is at 8.



十、Enter the balance

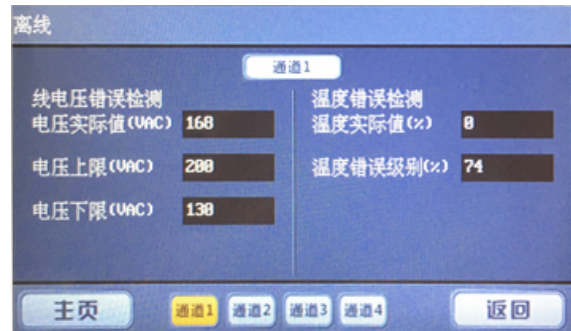
Parameters are as follows:

Input Equalization:	Paragraph 6
Type:	Parameter /Low frame/Viaduct
Frequency:	19.7Hz~20200Hz
Gain:	-15dB~+15dB, step 0.5dB
Bandwidth:	0.011~3.595



九、Voltage、Temperature、Current Detection Menu

- Click on corresponding button in the debugging interface to enter the temperature and voltage, current detection setting up the interface.
- Temperature detection function
Temperature detection is a kind of over-temperature protection function of the equipment. When the temperature is more than 85 degrees, the output signal will compress 1/3 and the temperature is more than 100degrees, the output signal will be compressed shrink 3/4, the temperature is greater than 110 degrees, no output; when the temperature falls to the normal range, the output will return to normal.
- Voltage detection function
The voltage detection parameter information is as follows:
Actual voltage value (VAC):
Display the actual detected voltage value.
Voltage upper limit (VAC):
Manually set voltage limit values, 0 to 277V, and must be less than the upper limit of the voltage. When the actual voltage detection value is higher than the set voltage upper limit or lower voltage limit, the device will enter the protective status, and the device will not output until the detected voltage is restored to the normal range of output.
- Current Detection Function
For the sane type of temperature detection when the detected output current is greater than the machine can bear, it is forced to enter the protective status, turn off all output and restore after restarting.
Remarks: The above voltage current temperature detection can be turn on or off by switch control, and the protective function will not work when it is in the off status.



十一、Crossover Network

Parameters are as follows:

High-pass filter/low-pass filter	
Slope:	12dB/24dB/36dB/48dB
Type:	Bessel/Butterworth/ Linkwitz-Riley
Gain:	-15dB~+15dB, step 0.5dB
Bandwidth:	0.011~3.595
Polarity:	+/-



FUNCTION DESCRIPTION

十二、The output equalization

Parameters are as follows:

Output equalization:	8 Paragraph
Type:	Parameter
Frequency:	19.7Hz~20200Hz
Gain:	-15dB~+15dB, step instance 0.5dB
Bandwidth:	0.011~3.595



十四、Pressure limit settings

1. Set the output voltage limit, which is divided into four levels: close, -3dB, -6dB, -12dB.
2. Click on the selection to take effect, in the closed state there is no pressure limit.

The corresponding gain is compressed under -3dB, -6dB, and -12dB respectively.



十六、Panel locking function

Panel lock function: According to the operation input password in the 1.3 setting menu, or through the GUI online click panel lock function enter password lock function to lock. The purpose of panel locking is to prevent parameter misadjustment and to restrict other users from changing device parameters and functions in case of misoperation or interference.

十七、Processor manual reset function

1. Reboot and hold the encoder while waiting for the display to appear.
2. Press the encoder to reset the machine when prompted, the display screen will appear when reset the work "Reset OK" prompt.

十八、Standby function

十九、Automatic Standby

1. The machine has no touch screen operation for 3 minutes, and without input, the LCD display screen will go out and the machine will go into power-saving state.
2. The input signal or light touch on the LCD screen will wake up.

二十、Push-button standby

1. Press the standby button and the machine goes into standby mode. Standby mode forces the current output to go into a low-power state and the LCD display to go out.
2. Press standby again to wake up and restore the output.
3. The key standby can be wakened by the key again.

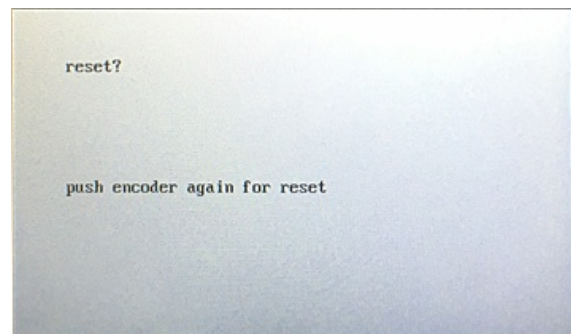
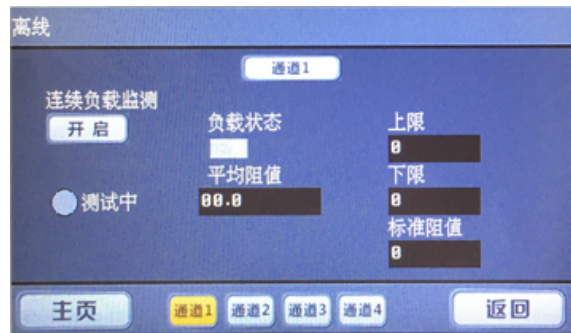
十三、Delay setting

1. Click the delay button in the debug interface to enter the delay setting interface.
2. Corresponding to each channel delay, the delay range is 0~1s, step 0.021s.
3. Select the delay which needs to be modified, and rotate the encoder to adjust.
4. Press the code will change the adjusting speed (steep), and the adjusting speed can be divided into x1, x10 and x100. In third gear, step is 2.1s.
5. Click the close button below after the modification, if it is on, it means the current channel delay has taken effect.
6. The delay is displayed in three units (milliseconds, feet, meters). Adjust one of these values, and the others will be modified accordingly.



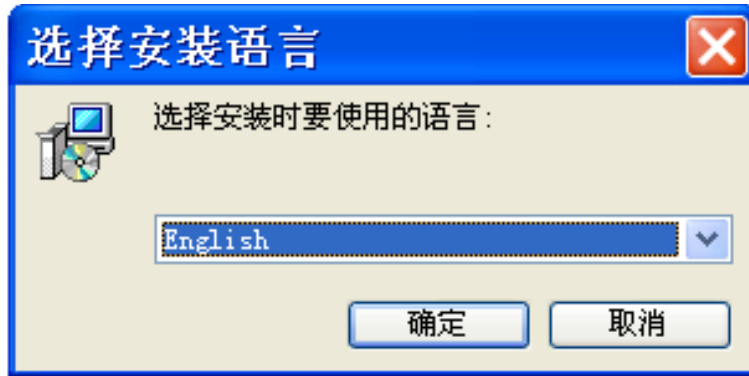
十五、Load Detection Menu

1. In the debug interface click the load button, you can enter the load detection settings interface.
2. Load detection function is used to test the working state of the sound in each frequency band.
3. Click on <open>, a sinusoidal signal output with a frequency varying gradually from 19.7Hz to 20.2KHz is generated, Then check the feedback of each band to determine the sound working status. Load curves can be drawn and recorded through GUI operations.

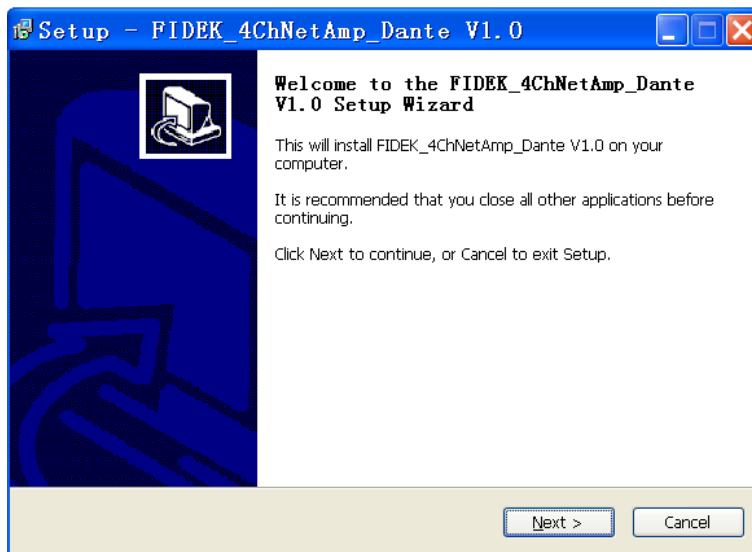


PC SOFTWARE INSTALLATION

1. Insert a disc in the drive, open the PC to choose Setup.exe to installate.
2. Choose the right language.



3. Click next step to continue the installation.



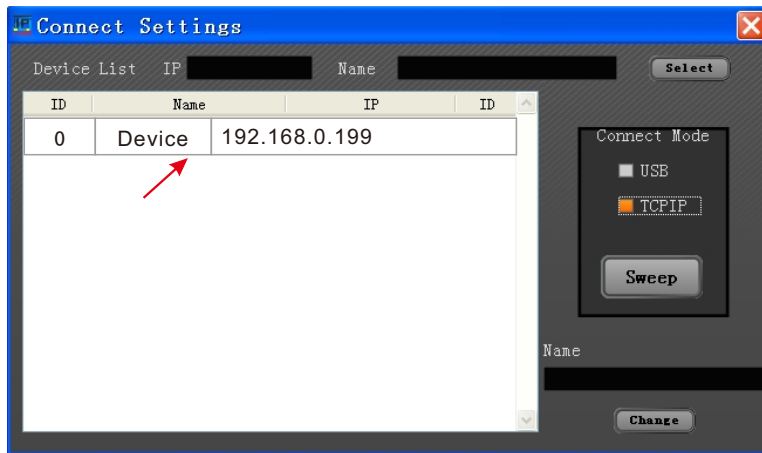
The software will tell you the information of the installation procedure, please according the tips to finish the installation.

4. User can choose USB to be connected, Please confirm the PC already connected with the equipment.
5. User can also choose website mode to connect, the procedure is as below:
 - 1) Set the IP address in the menu.
 - 2) Click the GUI menu to connect then choose TCP/IP as below:

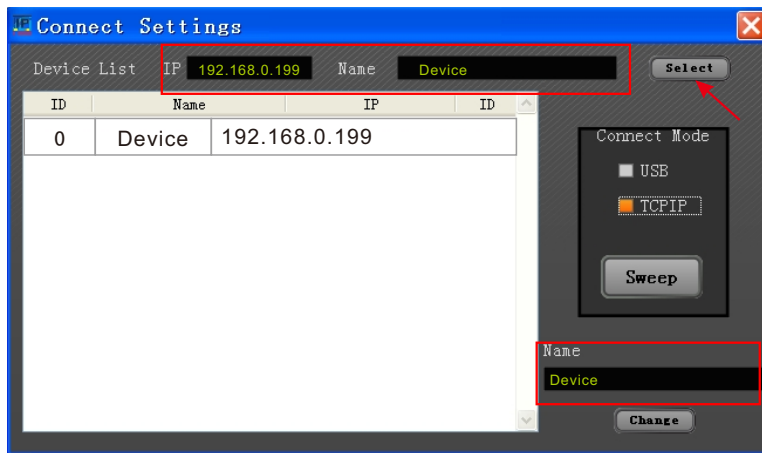


PC SOFTWARE INSTALLATION

3) Click scan(if use USB way to connect no need this step),it will show the IP if connect success.



4) Click the selection to choose the right equipment,then click connection.



5. The main menu of the software.

Four channel

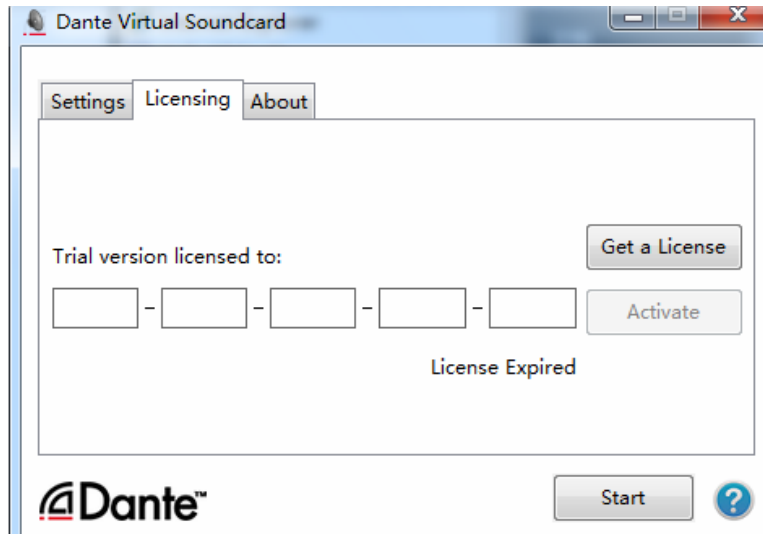


two channel

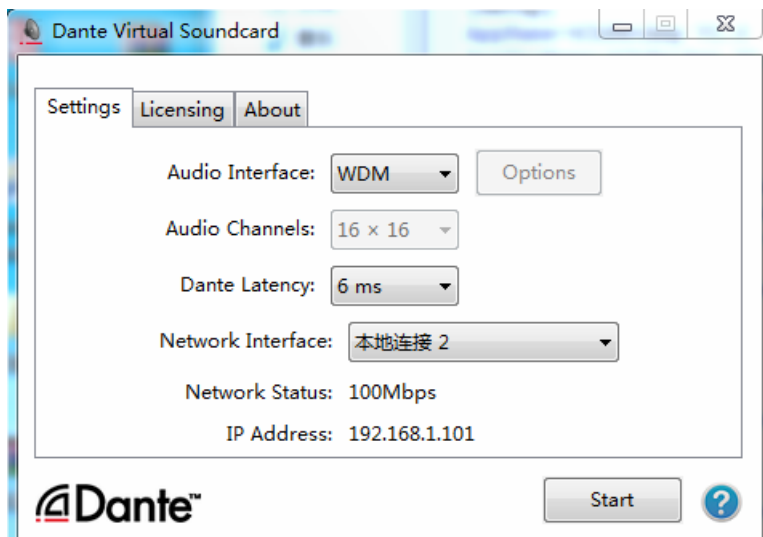


Dante CONTROL FUNCTION

1. Change from the input source selection to Dante input,connect the web line.
2. Open the software of Dante Virtual Soundcard.
3. Register the Licensing.



4. Click <Setting>,choose WDM,click <start>.

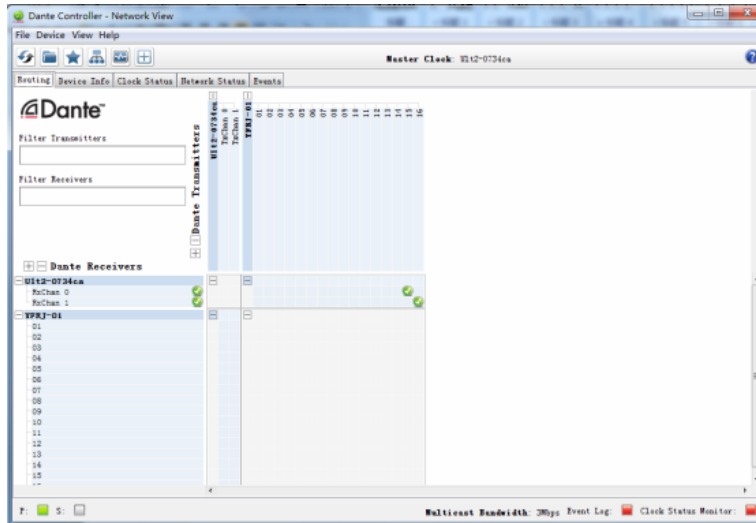


5. Open the software of Dante Controller.

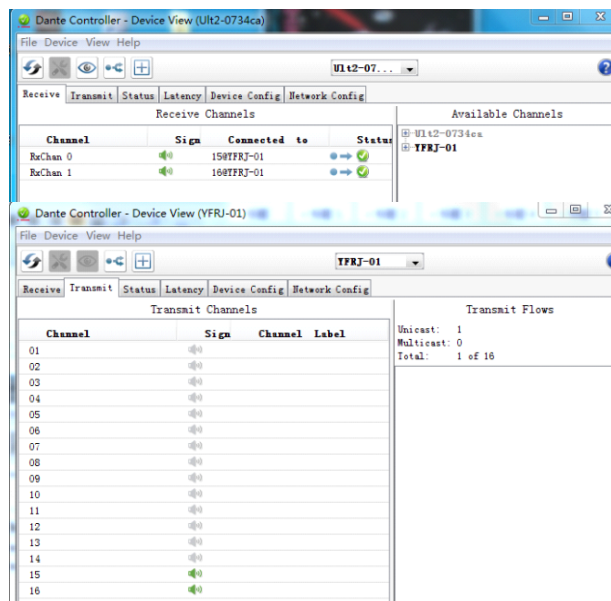


Dante CONTROL FUNCTION

As the below picture. ✓ means the channel selection. Channel 15,16 means the accept port of the Dante.



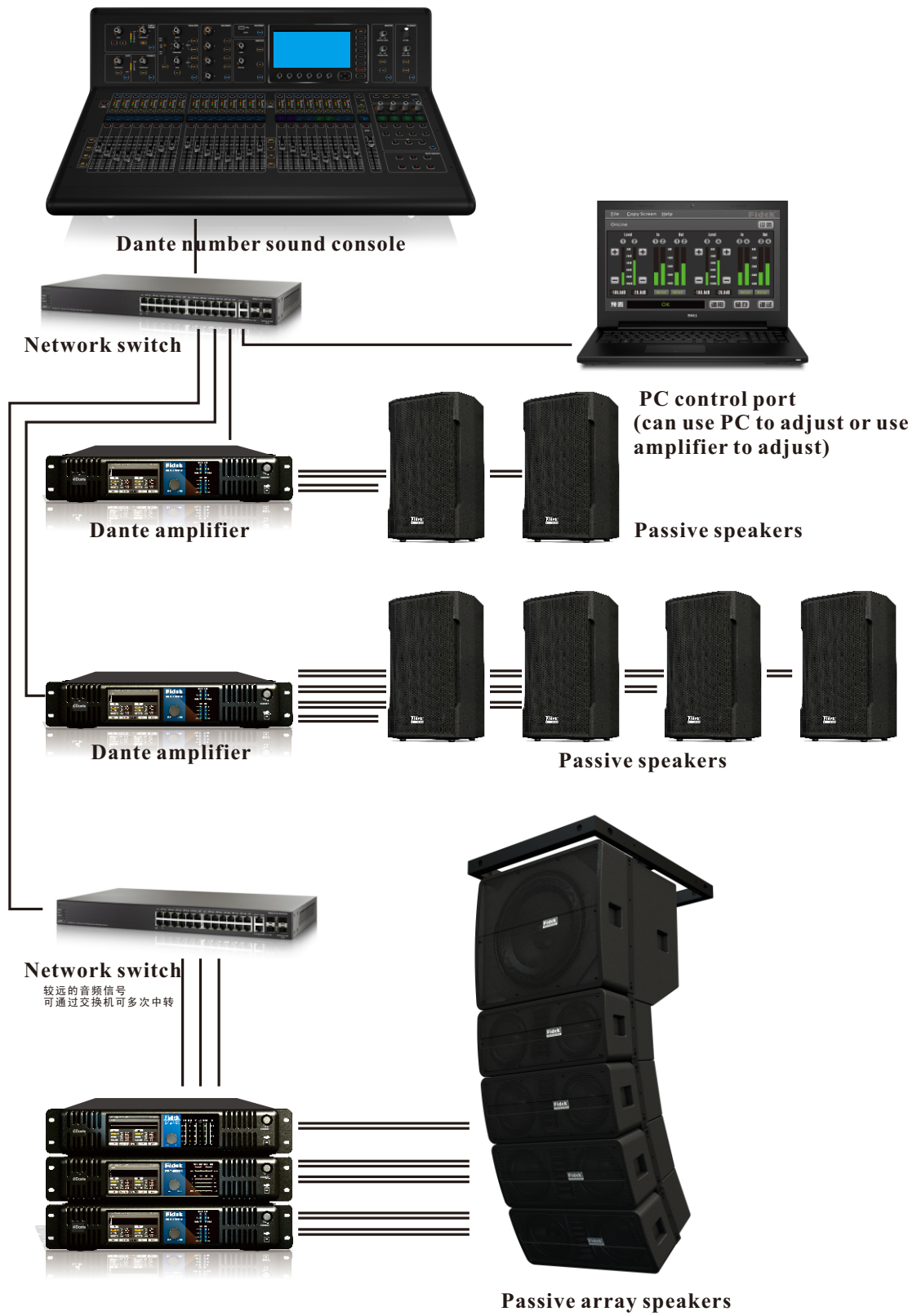
We can see the condition of the machine when click the Device View if connect success. We can also see Sign change to green color in the Receive of Dante.



SOFTWARE COMMUNICATION CONTROL FUNCTION IN COMPUTER

1. Control all the functions by GUI software. The rear panel cannot be operated on line.
2. Communication including parameter setting and reading, the adjustment of the audio parameter, software control and so on.
3. Parameter setting and reading including: parameter setting ,level reading, function lock,engineering lock and so on.
4. Software control can read one current procedure, 30 users' data operation.
5. We can click the “help” in the software to check the instruction details.

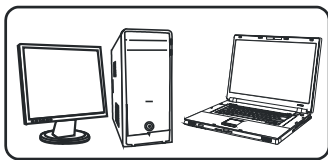
CONNECTION



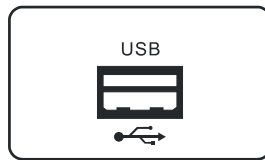
ON-LINE CONTROL PROMPT

The users must read the following instructions carefully before making an online control operation. This increases the risk of an exception such as offline, computer crash etc., when online control is performed:

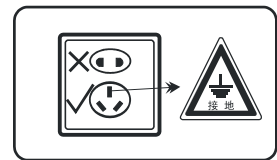
1. To ensure that the machine is in the normal working range; please check that the AC power supply (AC) complies with the machine allowed range before use.
2. If the conditions permit, the AC power outlet needs to have the grounding connection setting. And connect the grounded power supply to the computer and machine
3. Don't install the same version and type of control program in the computer repeatedly.
4. Don't control all the controls in the computer in the appropriate file directly.
5. It should avoid on-line control operation in the environment of strong signal interference.
6. Don't plug in the machine after the machine is turned on, if any of the following actions may result in the failure of online control or may even damage the machine or computer.
 - 1) Before the implementation of the online, please do not move your computer, machine or online control cable after the machine is turned on.
 - 2) Don't move your computer, machine, or online control cable after the machine is successfully online.
 - 3) Don't use machine panel after successful online operation, including touching the machine's any keystrokes.
 - 4) Don't plug in a machine or personal computer connection after successful online connection.
 - 5) Don't switch on the same type of online control software on your computer after you have successfully online.
 - 6) Don't use a computer to control multiple machines after successful online.
7. Refer to the "Important Safety Matters" section of the machine <<Instructions for Use>>.



1. Computer that can implement on-line control



2. Computer interface to implement on-line control



3. Grounding of AC Power Supply

COMMON TROUBLESHOOTING GUIDELINES

Malfunction phenomenon	Method of exclusion
No display on LCD screen, LED lamp no display	<ol style="list-style-type: none"> 1. Check if the power cord is connected. 2. Whether the power switch is on. 3. Is the fuse broken. 4. Is the standby key pressed or in an automatic standby state.
Machine and computer interface not USB	<ol style="list-style-type: none"> 1. Check that the line is connected properly 2. Check that the interface software matches the machine version 3. Close the interface software, reconnect the communication cable, and then open the interface software online
The machine and computer interface are not online	<ol style="list-style-type: none"> 1. Check that the network cable is connected properly 2. Check that the interface software matches the machine version 3. Check IP address is correct 4. Close the interface software, reconnect the communication cable, and then turn on the interface software online
Output channel no output	<ol style="list-style-type: none"> 1. Make sure the input is normal 2. Make sure the output to the amplifier and loudspeaker line is normal 3. Check that the input mode selection is correct 4. Check if the function voltage, current and temperature protection is turned on, which may lead to the protection state due to improper operation 5. Restart your machine 6. Multiple restarts are still not resolved, please contact your reseller
Liquid crystal display "ERROR CELL ERROR"	<ol style="list-style-type: none"> 1. Reset machine 2. Restart the machine 3. Multiple restarts are still not resolved, please contact your reseller
Liquid crystal display "exit by push encoder"	<ol style="list-style-type: none"> 1. Reset machine 2. Restart the machine 3. Multiple restarts are still not resolved, please contact your reseller

SIGNAL FLOW GRAPH



SPECIFICATIONS

Model number	FPT-8004	FPT-15002
Max Output Power @2Ω	900W X4	
Max Output Power @4Ω	600W X4	1600W X2
Max Output Power @8Ω	300W X4	1000W X2
Frequency response(8Ω, 20Hz-20KHz)	±0.5dB	±0.5dB
Signal-to-noise ratio [SNR] (digital signal input)	≥100dB	≥100dB
Signal-to-noise ratio [SNR] (analog signal input)	≥98dB	≥95dB
Channel Separation (1KHz)	≥70dB	≥70dB
Analog input impedance(balanced input, nonequilibrium input)	20 kOhms, 10 kOhms	20 kOhms, 10 kOhms
Dissipate heat	Automatic Speed Regulation Air Cooling	Automatic Speed Regulation Air Cooling
Power Supply Voltage(±10%)	220V~50/60Hz	220V~50/60Hz
Dimensions(WxDxH)	483x354x88mm	483x354x88mm
Input Port		
Analog	4Channel(12-pin phoenix plug)	2Channel(6-pin phoenix plug)
Digital	4Channel(12-pin phoenix plug)	2Channel(6-pin phoenix plug)
Dante	4 Channel (2xRJ45)	2 Channel (2xRJ45)
Output Port	Helices	Helices

The above technical specifications are subject to change without notice.

Fidek[®]