

Digital Cinema Xenon TA-type lamps

Other digital cinema projectors

Digital Xenon Cinema TA-type lamps are ideal for today's demanding 3D and 2D digital cinema presentations. There is a choice of four power ratings in the TA-type Digital Cinema Xenon lamps range: 3000W, 4500W, 6000W or 6500W. These lamps produce the very high light output needed to maximize screen brightness and enhance the dramatic effect for the viewer. These long-life digital lamps also provide constant color temperature characteristics, and meet all of the stringent arc-stability requirements for consistent customer satisfaction. In addition to TA-type Digital Cinema Xenon lamps there are B-, C-, N-, and S-type Digital Cinema Xenon lamps. These are all individually customized per projector, so there is a different, perfect-fitting lamp for each projector model to ensure optimized projector performance.

Benefits

- Increased brightness on the screen
- Optimum projector performance
- Constant color temperature
- High arc stability and long life

Features

- Higher light output than standard lamps
- Customized by projector model
- Pure xenon fill gas
- Proprietary, advanced electrode design

Application

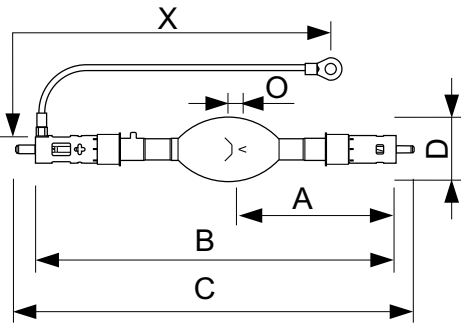
- Cinema projection

Other digital cinema projectors

Versions



Dimensional drawing



Product	O	D	X	B	C	A
XDC 6000 TA	7.0 mm	70 mm	400 mm	391 mm	433 mm	170.5 mm
XDC 6500 TA	7.5 mm	70 mm	400 mm	391 mm	433 mm	170.5 mm
XDC 4500 TA	6.0 mm	60 mm	400 mm	370 mm	410 mm	171.5 mm

General Information

Main Application	Cinema
Operating Position	P15

Operating and Electrical

order code	Lamp Current Span	Lamp Current (Nom)	Voltage (Nom)	Power (Rated) (Nom)
928414606301	140/175 A	170 A	38 V	6500 W
928414906301	140/175 A	170 A	35 V	6000 W

order code	Lamp Current Span	Lamp Current (Nom)	Voltage (Nom)	Power (Rated) (Nom)
928415906301	80/150 A	145 A	30 V	4500 W

General Information

order code	Nominal Lifetime (Nom)
928414606301	500 h
928414906301	600 h

order code	Nominal Lifetime (Nom)
928415906301	1000 h

Other digital cinema projectors

